

PROCESS SCANNER [Series μ CS 7000]



Universal Input, User configurable
 8/16 Channel versions available
 Display : 16 X 2 LCD /7 segment LED
 Storage of program and data
 Serial communication port, RS 232/RS-485
 with MODBUS RTU protocol
 Serial port for printer optionally available
 Typical accuracy $\pm 0.25\%$
 Two alarm settings per channel available
 Fast scanning rate, typically 100 ms/channel
 Channel skip facility available

CATALOG NO.: Dc-PSL-01

INTERFACING UNITS

SIGNAL ISOLATORS / DISTRIBUTORS SERIES 4400

Full range of inputs like mV, Thermocouple, RTD, Current, Voltage, Potentiometer available
 Front access for span & zero
 Isolated Input, output and power supply
 Isolation better than 100 M ohms
 Transmitter supply 24 V dc provided for current I /P
 One, Two, Three or Four outputs available
 Accuracy better than $\pm 0.25\%$
 DIN Rail mounting
 Ac current/ AC Voltage transducers also available
 Suitable to use with DCS, PLC, SCADA



CATALOG NO.: Ic-ISL-01

DRAFT TRANSMITTER/DRAFT INDICATOR

Used to measure boiler draft
 Wide range, ± 50 mmwc to ± 750 mmwc
 Digital readout and 4-20 mA dc output provided for control purpose
 Draft transmitter can be mounted on the field,
 Avoiding long piping lengths, eliminating large costs
 Temperature drift, less than $\pm 0.015\%$ °C
 Temperature compensation for span & zero provided
 Accuracy much better as compared to mechanical gauges
 Digital indication, so no confusion



CATALOG NO.: Pc-DFT-01

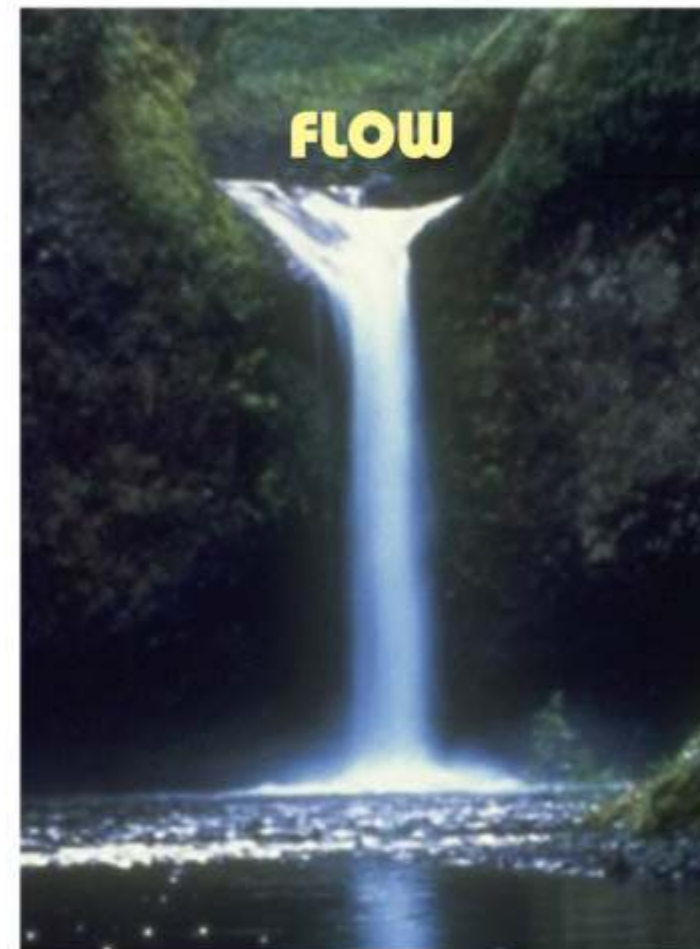
manas microsystems pvt. ltd.

REGD. OFFICE : ROW HOUSE NO. 5, PARVATI PARK, DATTAWADI, PUNE 411 030
 WORKS : EL 54 ELECTRONIC ZONE, M.I.D.C. BHOSARI, PUNE 411 026. (INDIA)
 TEL. : 020-27127044, 27127047, 27127858 FAX : 020-27127045
 E-MAIL : mktg@manasmicro.com, manasmicro@yahoo.com
 WEBSITE : www.manasmicro.com



CATALOG No : Gc - CC - 02/0

We Measure



manas

... a name that spells trust
AN ISO 9001 : 2000 COMPANY



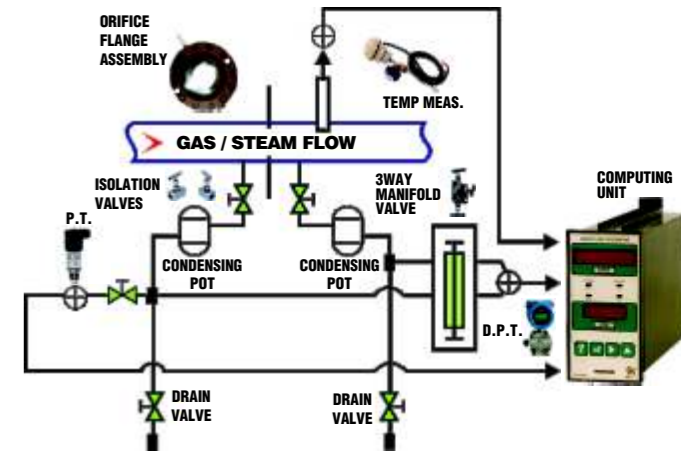
ELECTROMAGNETIC FLOW METER [FULL BORE] SROAT 1000

Available in different line sizes from DN10 to DN 350
 Wide choice of compatible electrodes and liners to suit your application
 Wide velocity range of 0.1m/s to 10 m/s
 Excellent Linearity & Accuracy, Typically better than $\pm 0.5\%$
 Pulse or frequency output also available optionally.
 Measurement independent of any density, viscosity, pressure, temperature, solid impurities and conductivity variations ($> 5\mu\text{S/cm}$).
 Major applications : Steel & Aluminium, ETPs & STPs, Sugar & Distilleries, Paper & Pulp, Food & Drug, Petrochemical & Fertilizer and Chemical & Pharmaceutical.

CATALOG NO.: Fc-FBE-02

AIR/GAS/BIOGAS/STEAM FLOW METERING SYSTEM WITH / WITHOUT DENSITY COMPENSATION

GFM 100 for air, gas, biogas flow measurement
 GFM 200 for steam flow measurement (IBR approval available).
 On-line density compensation possible because of on-line temperature & pressure measurement indicating exact mass flow rate.
 Models of mass flow computing units $\mu\text{CS 3001}$ for GFM 100 and $\mu\text{CS 3003}$ for GFM 200 are available.
 Cost effective solution of Integral orifice is available in line sizes from $\frac{1}{2}$ " to $1\frac{1}{2}$ "
 Caters to the needs of all industries: Steel & Aluminium, Sugar & Distilleries, Food & Drugs, Chemical /Pharmaceuticals, Petrochemicals & Fertilizers.



CATALOG NO.: Fc-MFC-01

ELECTROMAGNETIC FLOWMETER [INSERTION] SROAT 1000i

An Ideal solution for water flow measurements in large diameter pipes
 Suitable for different line sizes from 200 mm to 2000 mm
 Measurement results are independent of density, viscosity, pressure, temperature, solid impurities & conductivity variations (above $20\mu\text{S/cm}$)
 Excellent long term stability using pulsed DC magnetization & auto zero technique.
 Light in weight and easy to install.
 Accuracy is typically $\pm 2\%$ of actual flow rate.
 Best suited for irrigation & water supply departments, public services & utility departments.



CATALOG NO.: Fc-INE-01

Level



CATALOG NO.: Lc-Ls-01

CAPACITANCE TYPE LEVEL SWITCHES LSC-01 & LSC-02

Based on principle of detection of change in capacitance.
 LSC-01: Can be immersed or hanged. MOC of switch : PVC
 LSC-02: Available in different lengths from 50mm to 350mm in steps of 50mm. MOC of probe: SS 316 coated with PTFE.
 Wide temperature range:
 For LSC-01: $0-60\text{ }^\circ\text{C}$
 For LSC-02: $0-140\text{ }^\circ\text{C}$
 Suitable for conductive liquids.
 Works well even with steam condensate
 Compatible with food grade and corrosive liquids.
 Logic/ contact output available
 Easy to install.
 24 VDC/ 5VDC operated versions available.

ECONOMICAL SERIES OF ELECTROMAGNETIC FLOWMETERS SERIES JAL-OAGH 100,200 & 300 :

JAL-OAGH 100: SS Threaded flow meters (DN 25-DN 65)
 JAL-OAGH 200: Sandwich flow meters (DN 25-DN 200)
 JAL-OAGH 300: Wafer flow meters (DN 25-DN 200)
 Can be made available for chemicals with proper selection of compatible liners and electrodes.
 Compact in size and absolutely no compromise on performance.
 Accuracy better than $\pm 0.5\%$ of actual flow rate.
 Small in size, Less in weight and easy to install
 Specially designed for water and wastewater measurement.



CATALOG NO.: Fc-FBE-03

FLOAT TYPE LEVEL SWITCH LSF-01

Principle based on sliding the ball by gravity
 Temperature range upto $70\text{ }^\circ\text{C}$
 Differential level control by adjusting the distance between the float and the weight
 Changeover contact output available
 Fully sealed polypropylene float compatible with corrosive, acidic and alkaline media



CATALOG NO.: Lc-LS-01